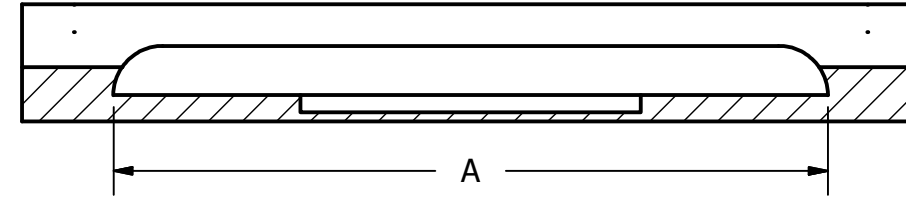
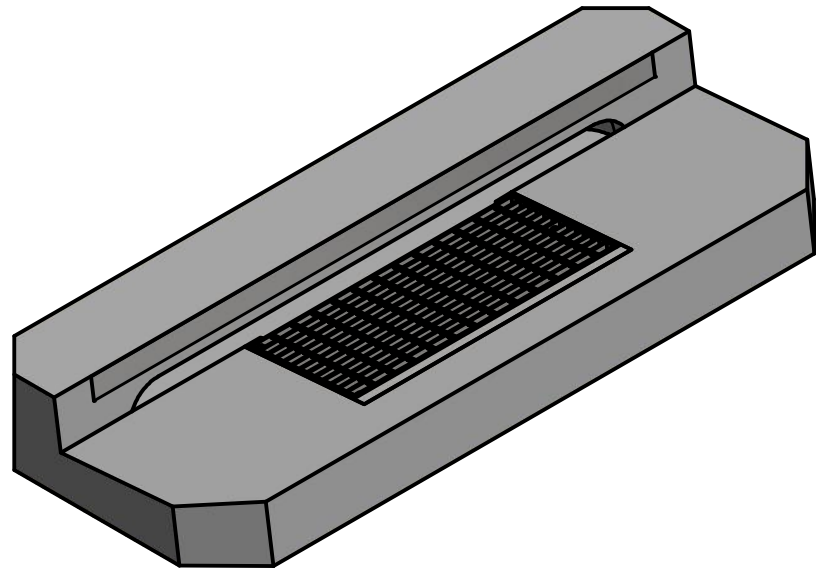
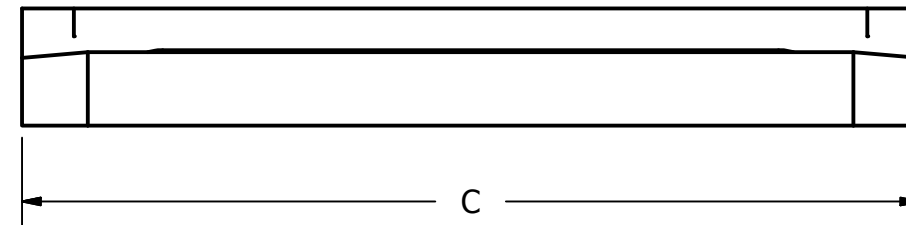
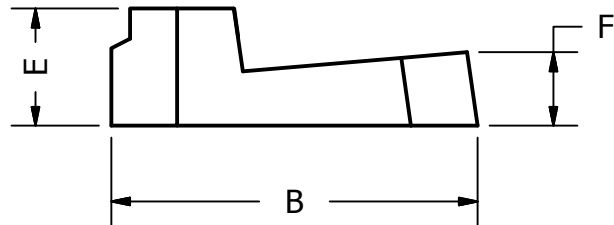
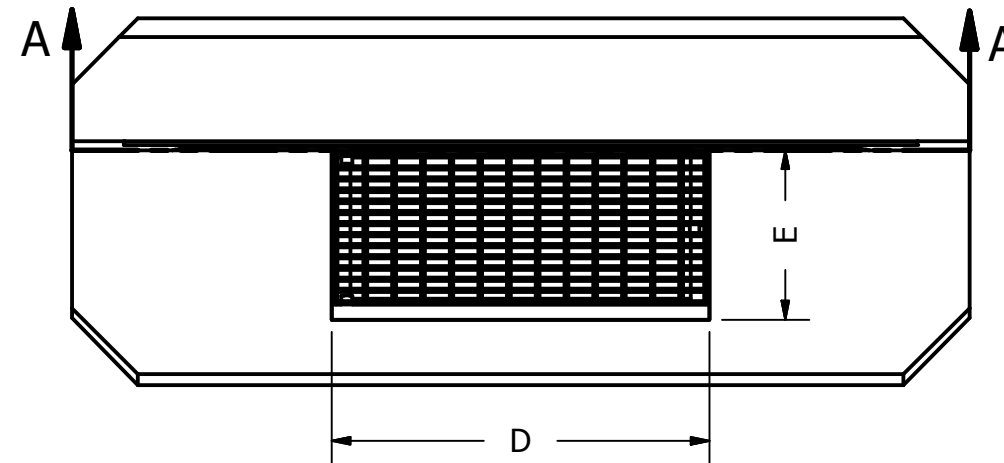


ACP Sales Pty Ltd

The Precast Concrete Specialists



SECTION A-A
SCALE 1 / 20



ALL THE KERB ENTRY UNITS ARE AVAILABLE IN LEFT, CENTRE, AND RIGHT OPTIONS WITH B CLASS AND D CLASS GRATES

PRODUCT DETAILS AND DIMENSIONS							
PRODUCT CODE	Wt. Kg	A	B	C	D	E	F
KEU1200	600	1200	960	1780	900	320	240
KEU1800	980	1800	960	2375	900	320	240
KEU2400	1256	2400	990	2980	900	350	220

ALL DETAILS IN THIS DRAWING IS COPY RIGHTED
ALL DIMENSIONS ARE IN MM, UNLESS OTHERWISE NOTED

ALL THE PRECAST ELEMENTS MANUFACTURED UNDER AS 3850:2015,
ARE RATED TO CLASS D TO AS 3996-2006 AND IN ACCORDANCE TO AS/NZS 3500.3:2015

Construcion Materials

- Strength 40Mpa @ 28 Days
- Max. Aggregate Size Is 20mm
- Sand, Washed Sand
- Cement 400Kg/ Cubic Mtr
- Reinforcement N12 bars around the perimeter, as required

ACP SALES PTY LTD			
TITLE			
KERB ENTRY 1200-2400			
SIZE	DWG NO	REV	
A3	ACP SALES - KERB ENTRY	A	
SCALE	1 / 20	SHEET 1 OF 1	