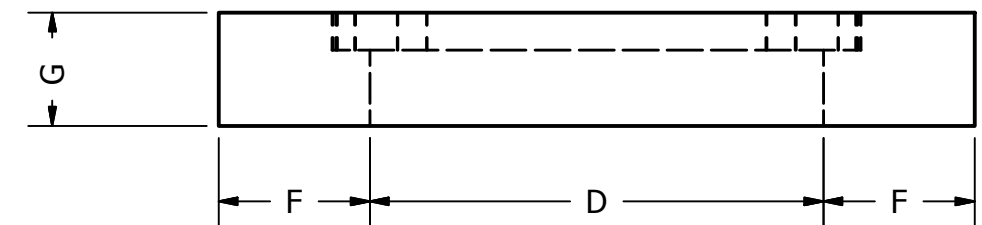
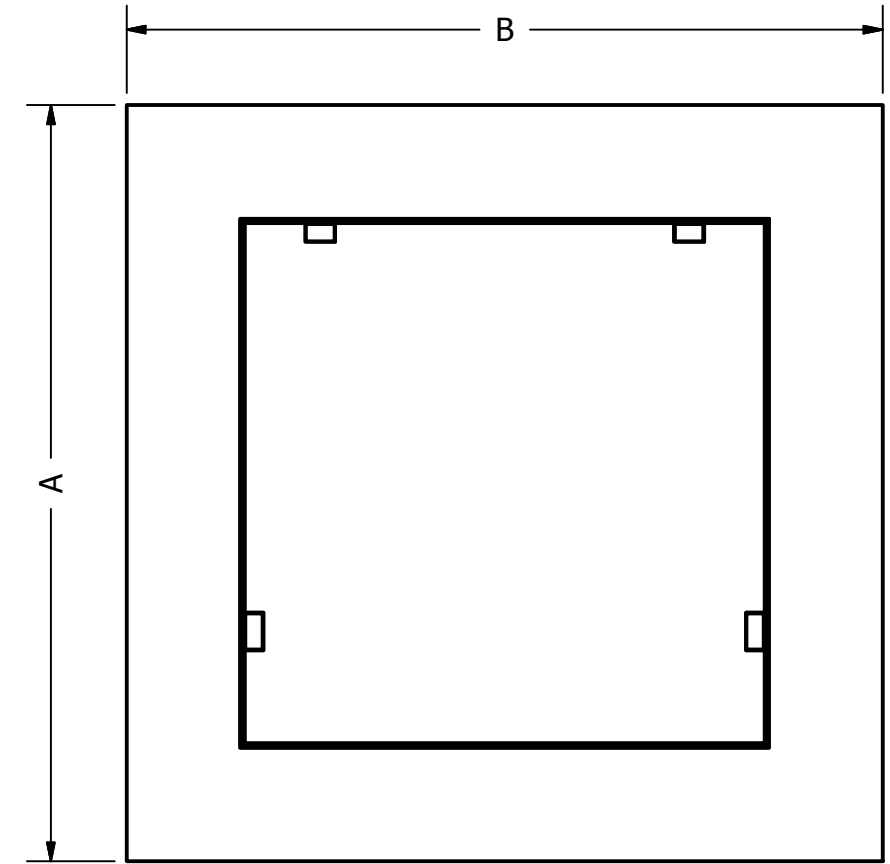
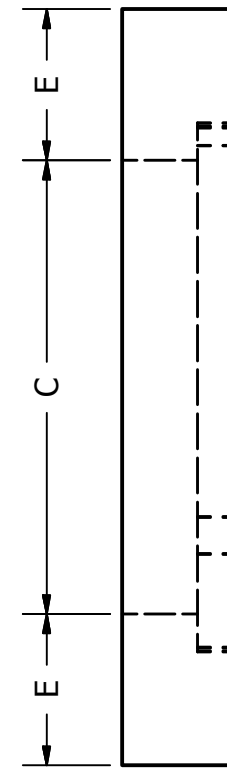
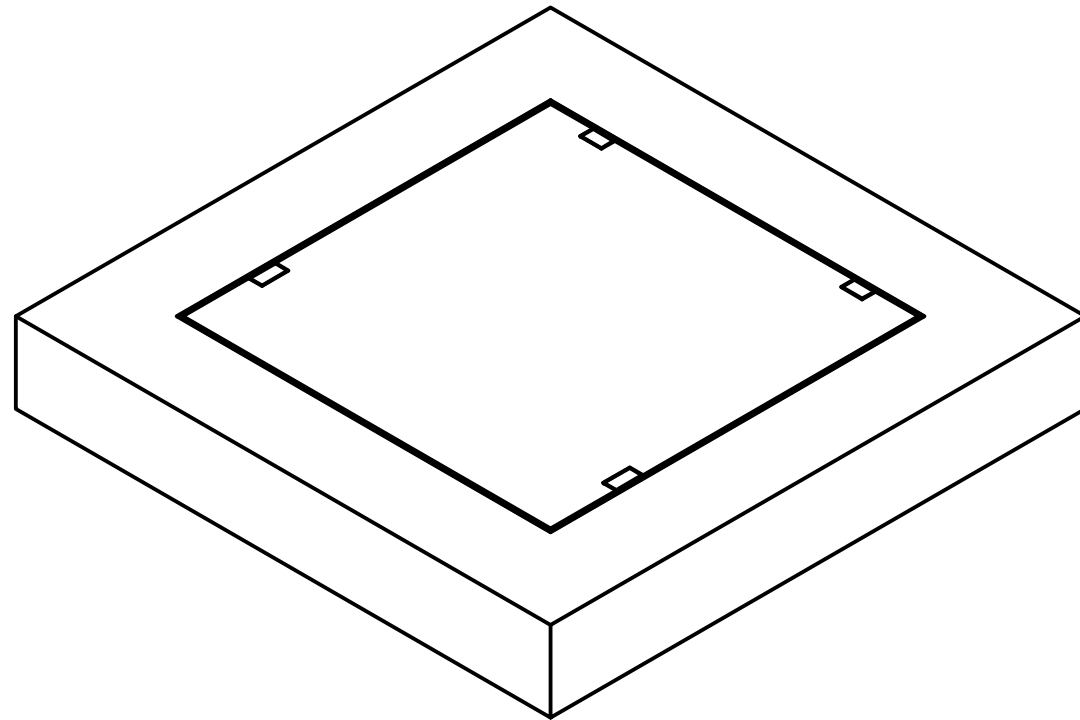


# ACP Sales Pty Ltd

## The Precast Concrete Specialists



PRODUCT DETAILS AND DIMENSIONS								
PRODUCT CODE	Wt. Kg	A	B	C	D	E	F	G
SCIC4444B		650	650	450	450	100	100	150
SCIC4444D		650	650	450	450	100	100	200
SCIC6644B		800	800	450	450	175	175	150
SCIC6644D		800	800	450	450	175	175	200
SCIC6666B		800	800	600	600	100	100	150
SCIC6666D		800	800	600	600	100	100	200
SCIC9644B		1100	800	450	450	150	175	150
SCIC9644D		1100	800	450	450	150	175	200
SCIC9666B		1100	800	600	600	150	100	150
SCIC9666D		1100	800	600	600	150	100	200
SCIC9696B		1100	800	900	600	100	100	150
SCIC9696D		1100	800	900	600	100	100	200
SCIC9966B		1100	1100	600	600	250	250	150
SCIC9966D		1100	1100	600	600	250	250	250
SCIC9999B		1100	1100	900	600	100	100	150
SCIC9999D		1500	1500	900	900	300	300	250
SCIC12966B		1500	1100	600	600	450	250	150
SCIC12966D		1500	1100	600	600	450	250	250
SCIC121266B		1500	1500	600	600	450	450	150
SCIC121266D		1500	1500	600	600	450	450	250
SCIC121299B		1500	1500	900	900	300	300	150
SCIC121299D		1500	1500	900	900	300	300	250

ALL THE PRECAST ELEMENTS MANUFACTURED UNDER AS 3850:2015,  
WHICH ARE RATED TO CLASS D TO AS 3996-2006 AND IN ACCORDANCE TO AS/NZS 3500.3:2015

ALL DETAILS IN THIS DRAWING IS COPY RIGHTED  
ALL DIMENSIONS ARE IN MM, UNLESS OTHERWISE NOTED  
ALL THE UNITS ARE AVAILABLE WITH B CLASS AND D CLASS CAST IRON COVER

### Construcion Materials

- Strength 40Mpa @ 28 Days
- Max. Aggregate Size Is 20mm
- Sand, Washed Sand
- Cement 400Kg/ Cubic Mtr
- Reinforcement N12 bars around the perimeter, as required

ACP SALES PTY LTD		
TITLE		
SURROUND CAST IRON COVER		
SIZE	DWG NO	REV
A3	ACP SALES - SCIC	A
SCALE	SHEET 1 OF 1	
1 / 10		